



LIGHT STEEL FRAME  
CONSTRUCTION

beSteel

FASTER - LIGHTER - CIRCULAR

# Construction with steel frame.

“

Steelframe by beSteel delivers fast and sustainable construction, a lightweight yet powerful solution.

”

At beSteel you'll find a remarkably **sustainable alternative for traditional construction methods**. We're specialized in calculating and producing cold-formed steel profiles for any type of construction.

**Our metal constructions are the ideal solution for new constructions and renovations of houses, apartments, elevations, etc.** Our digital and industrial approach considerably accelerates, simplifies and perfects the entire construction process.

**Our clients are mainly construction companies, contractors and real estate promoters.** We offer them complete support during their construction projects, from the stability study to manufacturing, including the design of the load-bearing framework and the digitalisation of plans.

beSteel, a Belgian company, is part of **The BuildUp Company** and is active in Europe, the Caribbean and the French overseas territories.

# Advantages

---



## **SPEED**

Save 40% of time on site compared to traditional construction.



## **STURDINESS**

Despite its light weight, the frame is incredibly sturdy. It is composed from steel, the material with the highest strength-to-weight ratio in the world.



## **LIGHTNESS**

Light steel weighs 30% less on the foundation compared to wooden construction methods. Ideal for elevations!



## **A CLEAN SITE**

Thanks to the offsite production, nothing has to be cut on site. This way we reduce waste to absolute zero.



## **ARCHITECTURAL FREEDOM**

The architect has full creative freedom. We build our steel frames completely according to the design.



## **SUSTAINABILITY**

Our production process is based on the cradle-to-cradle philosophy. All materials can be fully recycled and reused. We also provide biobased hybrid solutions.



## **100% BY THE BOOK**

Light steel frames fully comply with the rules and requirements for fire resistance and thermal and acoustic insulation. Thanks to prefabrication, we can promise you a flawless end result.

# Applications.

Residential, commercial, collective, modular, ... Steel frame construction can handle anything! Complete with total architectural freedom.



Light steel frame building structures consist of **cold-rolled steel profiles that are assembled into various panels that form 2D modules.**

This revolutionary method has several advantages for contractors and architects and improves the living comfort of the residents.

As the market leader since 2015, we guarantee our technological expertise which is completely up to date with recent regulations.



## RESIDENTIAL BUILDINGS

Steel construction is the ideal base for a house and is perfectly able to answer the increasing requirements for energy and living comfort.



## APARTMENT BUILDINGS

Steel structures are perfect for constructing multi-storey buildings.



## ELEVATIONS

Steel construction is very light and therefore very useful for elevations on an existing building and for building on a less load-bearing surface.

## OUR PROJECTS

Scan the code and have a look online.



# Engineering and production.



## FABRICATED

Save time on site! In our production center we assemble steel profiles into complete 2D panels that we deliver to the site.

- 2D light steel frame panels



## FASTWALL

FastWall combines steel construction with a high-quality plating for an even faster construction process. These 2D panels are pre-assembled in our factory.

- 2D light steel frame panels
- High quality plating

## ENGINEERING OFFICE AND DIGITAL EXPERTISE

Our architects and experts digitally monitor each project in our 3D BIM portal. In this way we ensure that your project meets the strictest technical requirements and rules for stability. Our designers and engineers optimize the 3D designs and calculations to make sure your project complies with the current Eurocodes.

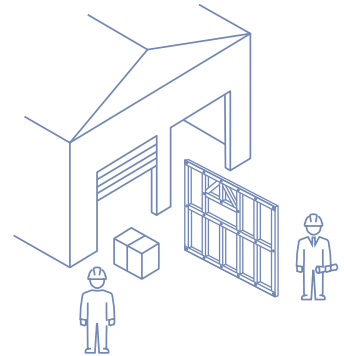
# From design to site.



1

## INTERNAL ENGINEERING OFFICE

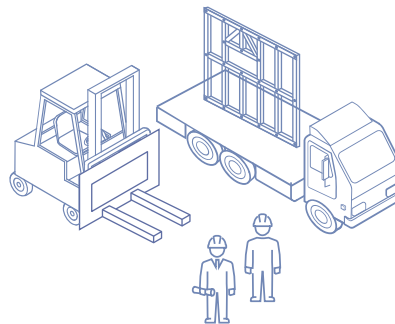
Both the 3D model of your project and the 2D panels are created digitally. Just like the stability calculations which are fully in accordance with the Eurocodes.



2

## OFFSITE PRODUCTION AND ASSEMBLY

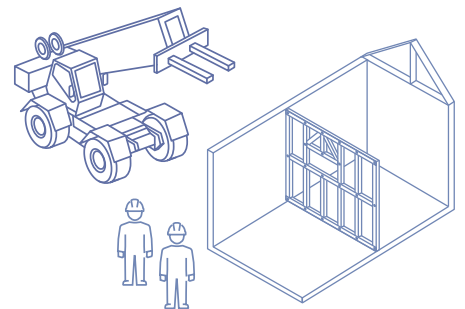
In our factory, all parts are produced and assembled with extreme precision in a controlled environment. Including the platings.



3

## TRANSPORT

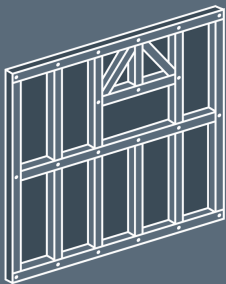
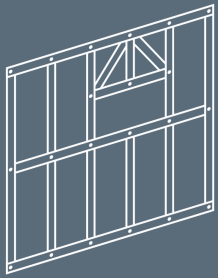
The panels are delivered to the site in a structured way for optimal organization and high efficiency.



4

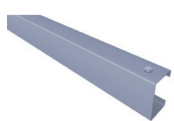
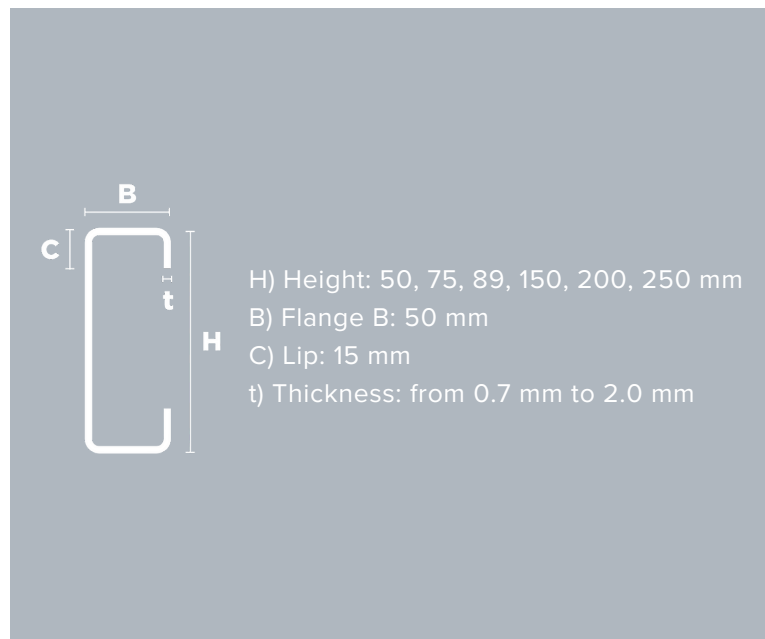
## INSTALLATION ON THE SITE BY THE CONTRACTOR

You can count on fast and precise installation by the contractor. Technical assistance from our beSteel Certified Advisor is available.



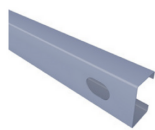
## Steel, our foundation.

beSteel profiles are made from Arcelor Mittal Magnelis® steel. They have high quality and are corrosion resistant. Consisting of 3.5% aluminum and 3% magnesium.



**SCREW HOLE**

For a quick, simple and precise assembly.



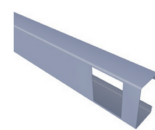
**SERVICE HOLE**

For electrical applications.



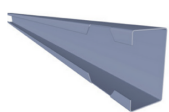
**INDEX HOLE**

For connections with bolts.



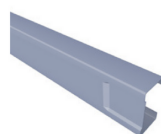
**WEB NOTCH**

Profiles fit together horizontally.



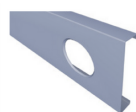
**LIP NOTCH**

For mounting profiles easily.



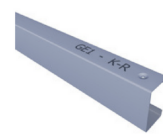
**SWAGE ENDS**

For precise fixing of profiles.



**UTILITY SERVICE HOLE**

Hole of 120-140 mm for sanitary elements and ventilation.



**PRINT ID LABEL**

For time-saving, well-organized installation.





CERTIFIED  
ARCHITECT



CERTIFIED  
ADVISOR



CERTIFIED  
CONTRACTOR

RE  
CON  
STR  
UCT  
ING

CONSTRUCTION  
FOR GOOD

RELIABLE PARTNERS

06

Our network  
of partners.

At beSteel we surround ourselves with reliable, high-quality and experienced construction partners. Together we make steel frame construction stand out!

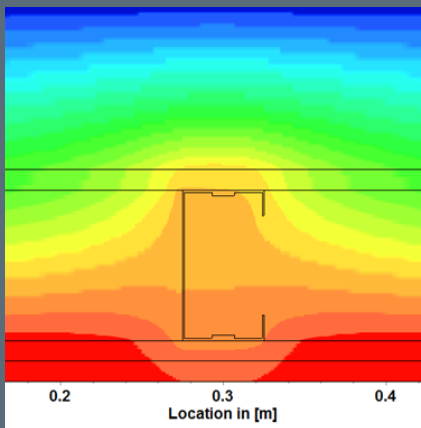
Are you a contractor, architect or specialized consultant in steel frame construction?

Be sure to contact us! Who knows, you might be the next indispensable link in our network.

## Meeting the highest standards.

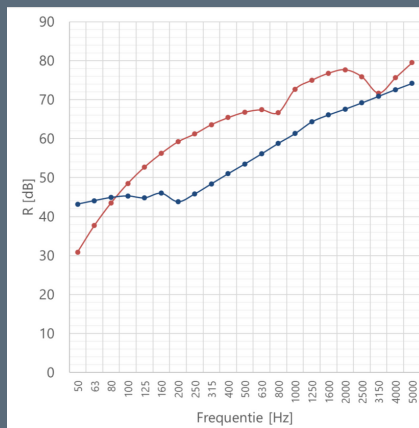
### THERMAL INSULATION

A building in perfect harmony with EPB requirements. You save in wall thickness and gain surface.



### ACOUSTIC INSULATION

Enjoy high acoustic comfort. We supply a supportive test on the site.

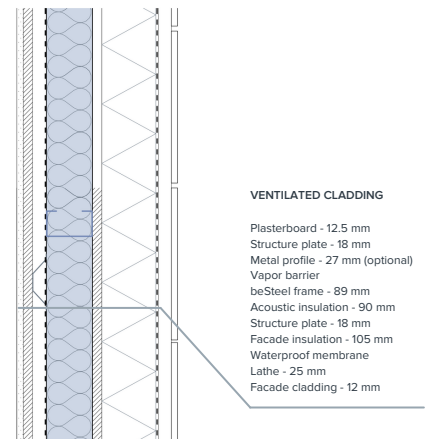
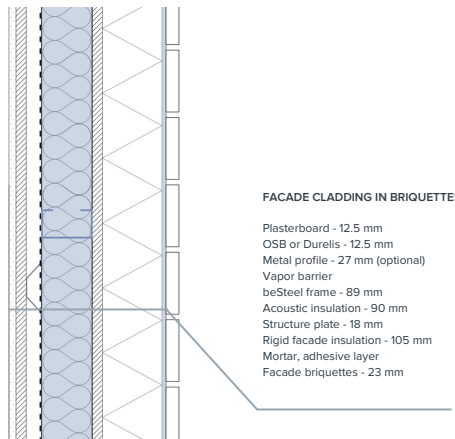
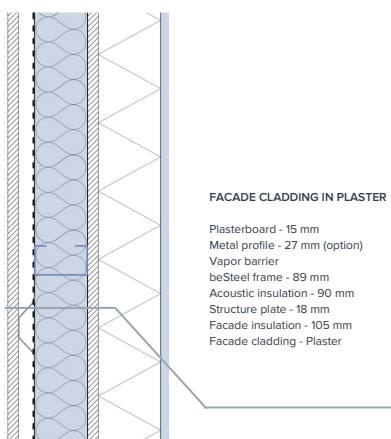


### FIRE RESISTANCE

Depending on the selected coating, beSteel structures achieve a resistance of REI 120.



### CLADDING, PLATING AND INSULATION TYPES CAN BE ADAPT TO REACH THE DESIRED STANDARDS



# On the road to carbon neutrality.

## CRADLE TO CRADLE

Steel construction is one of the few methods that offers a clear answer to the need for circular construction.

That's because steel structures are 100% recyclable and the profiles and panels are easy to disassemble without losing quality.



## XCARB® - TOWARDS A CARBON NEUTRAL STEEL

At beSteel, we are convinced that steel plays an essential role in achieving a low-carbon future. It is an important part of the solution.

XCarb® steel reduces the European CO2 emissions from steel production and aims to develop a carbon neutral steel by 2050.



## WOOD OR STEEL? BEST OF BOTH WORLDS

A miracle solution does not exist. That is why we offer a hybrid module of wood and steel to reduce the CO2 impact. This combines the strength of both materials and ensures a balanced use of raw materials.

#### ULTRA FAST CONSTRUCTION

With offsite production and assembly in a controlled environment, we avoid delays on site, allowing us to do the installation quickly and accurately.

#### SUSTAINABLE AND LIGHTWEIGHT

30% lighter than wooden construction methods. A hybrid module made of light steel also helps to reduce the CO2 impact of the construction sector.

#### 360° EXPERTISE AND DIGITAL FOLLOW-UP

We produce your light steel frame and monitor your project internally from A to Z. You can be sure that it meets the strictest technical requirements and rules for stability.

#### CONTACT

[sales@be-steel.eu](mailto:sales@be-steel.eu)

[www.be-steel.eu](http://www.be-steel.eu)

SCAN THE CODE FOR MORE ABOUT  
OUR PRODUCTS AND SOLUTIONS



**BESTEEL IS A PROUD  
MEMBER OF  
THE BUILDUP COMPANY**