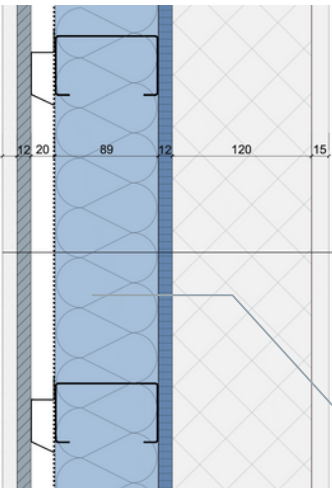
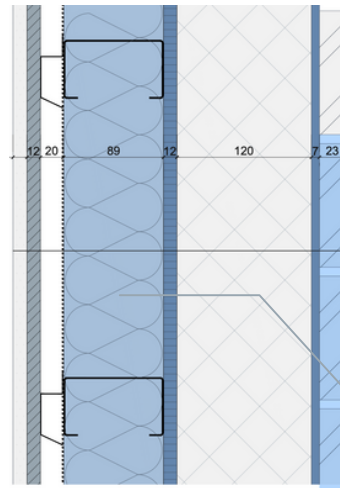


ARCHITECTURAL DETAILS



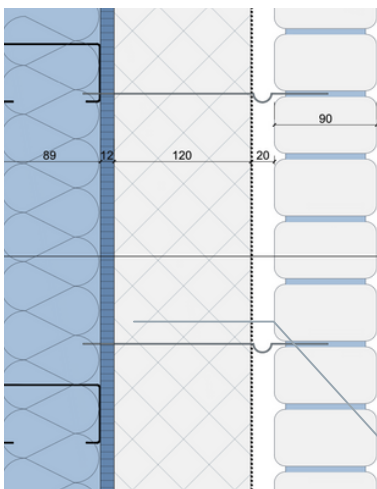
PLASTERPAINT FACADE

Plasterboard - 13mm
 Metal profile - 27mm (optional)
 Vapor barrier
 beSteel frame - 89mm
 + Acoustic insulation - type rockwool or woodwool - 90mm
 Structural plate - type Durelis or OSB/3 - 12mm
 Rigid insulation - type PUR - 105mm
 Plasterpaint - 15mm



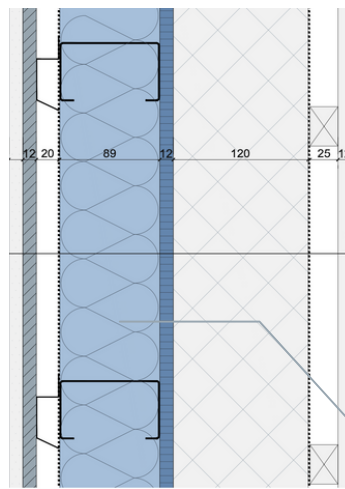
STONE STRIPS CLADDING FACADE

Plasterboard - 13mm
 OSB or Durelis - 12mm
 Metal profile - 27mm (optional)
 Vapor barrier
 beSteel frame - 89mm
 + Acoustic insulation - type rockwool or woodwool - 90mm
 Structure plate - type Durelis or OSB/3 - 12mm
 Rigid insulation - type PUR - 105mm
 Mortar, adhesive layer
 Stone strips - 23mm



VENTILATED FAÇADE MASONRY

Plasterboard - 13mm
 OSB or Durelis - 12mm
 Metal profile - 27mm (optional)
 Vapor barrier
 beSteel frame - 89mm
 + Acoustic insulation - type rockwool or woodwool - 90mm
 Structural plate - type Durelis or OSB/3 - 12mm
 Rigid insulation - type PUR - 105mm
 Waterproof membrane
 Ventilated space - 20mm
 Facade bricks - 90mm



VENTILATED FACADE CLADDING

Plasterboard - 13mm
 OSB or Durelis - 12mm
 Metal profile - 27mm (optional)
 Vapor barrier
 beSteel frame - 89mm
 + Acoustic insulation - type rockwool or woodwool - 90 mm
 Structural plate - type Durelis or OSB/3 - 12mm
 Rigid insulation - type PUR - 105mm
 Waterproof membrane
 Wooden lattage - 25mm
 Facade cladding - type Eternit or wooden plate, aluminium, composite materials,... - 12 mm